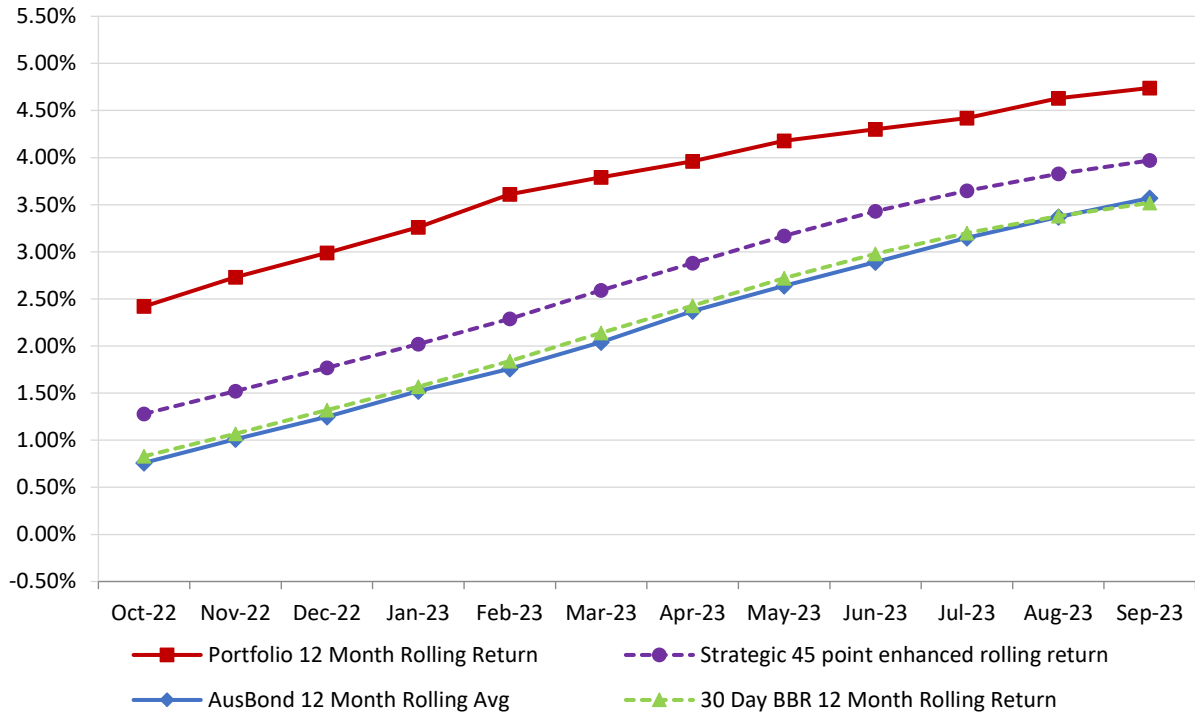


Attachment B

**Investment Performance
as at 30 September 2023**

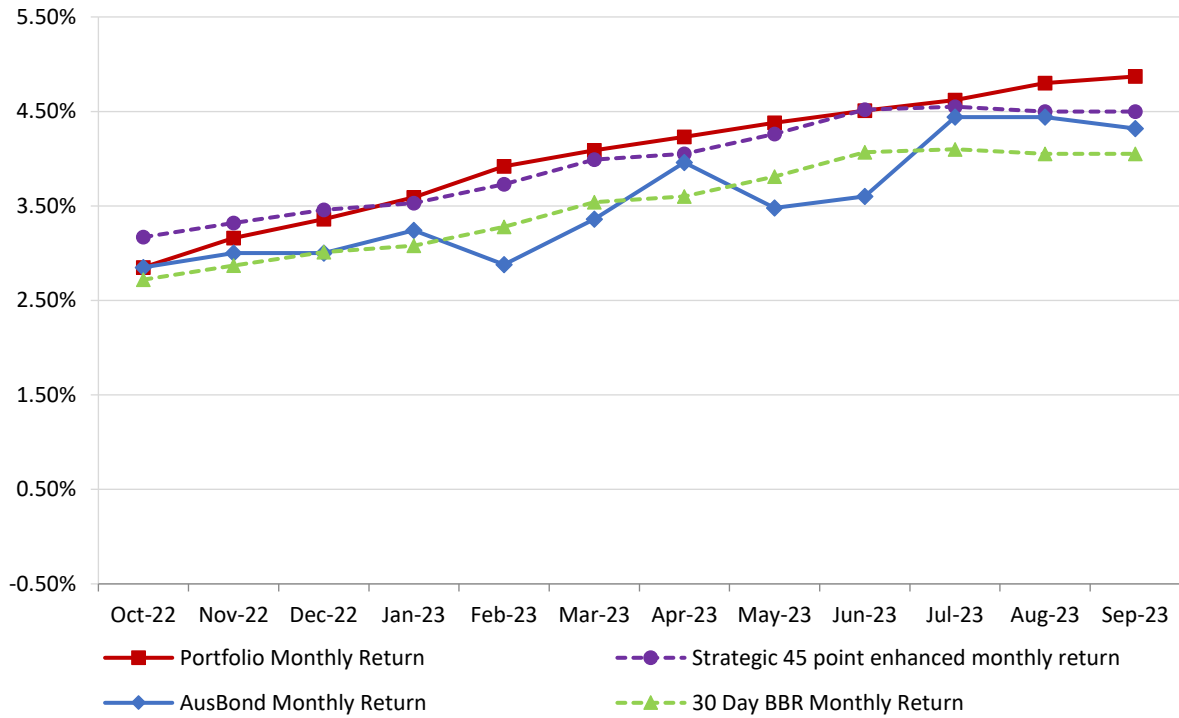
12 Month Rolling Averages

**Actual Portfolio vs Strategic Enhanced Benchmark vs AusBond Benchmark vs 30 Day BBR Benchmark
September 2023**

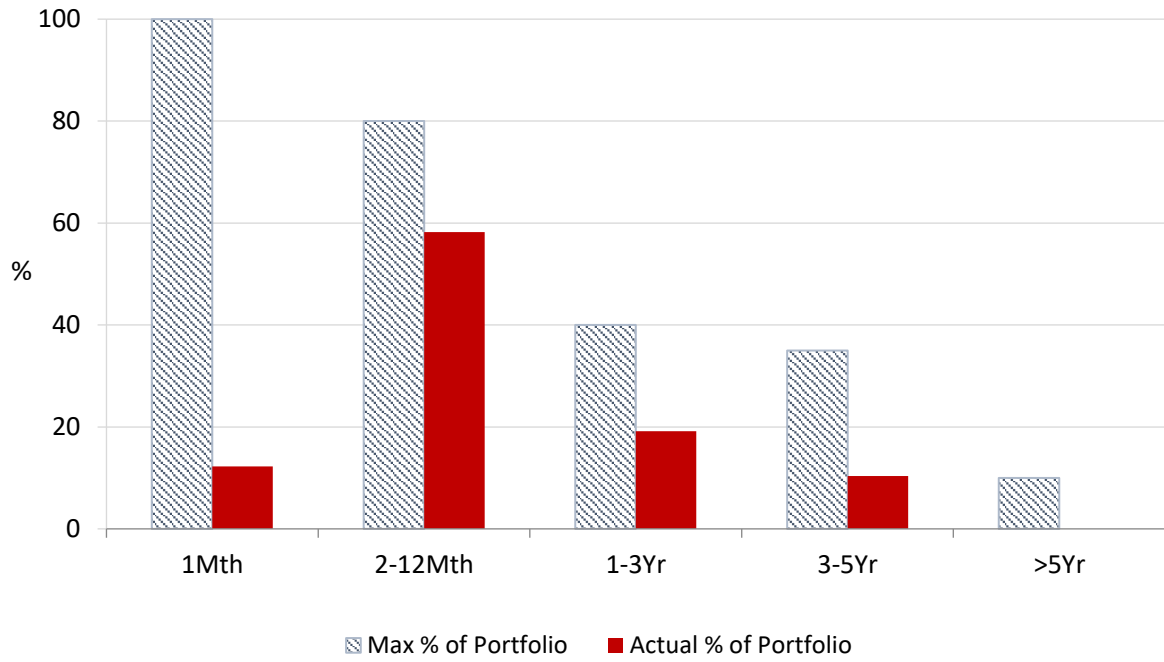


Monthly Results

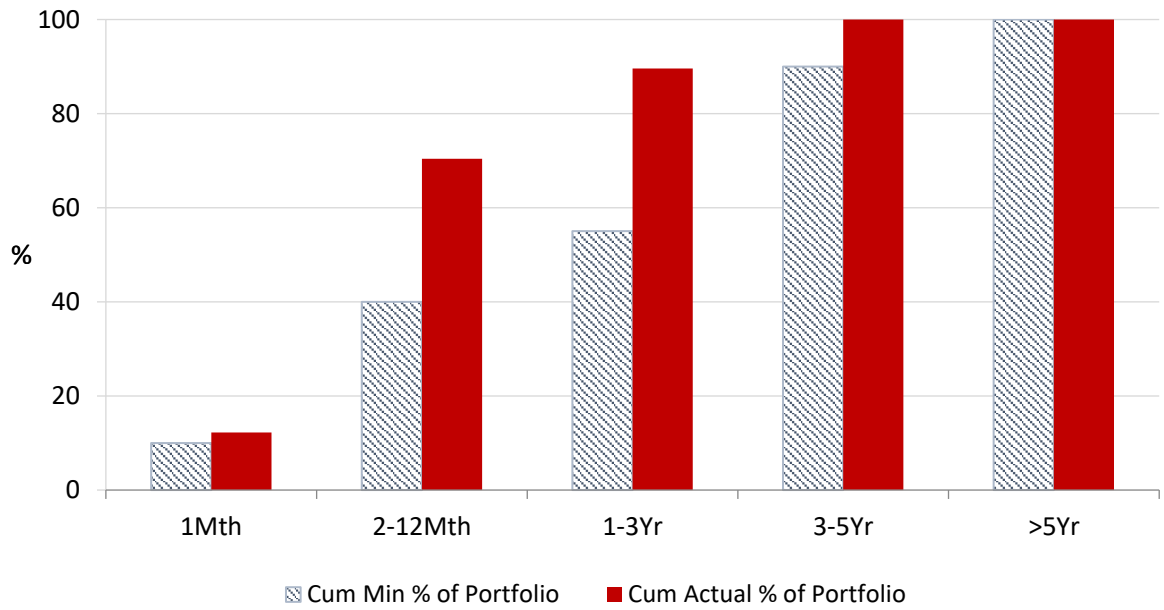
**Actual Portfolio vs Strategic Enhanced Benchmark vs AusBond Benchmark vs 30 Day BBR Benchmark
September 2023**



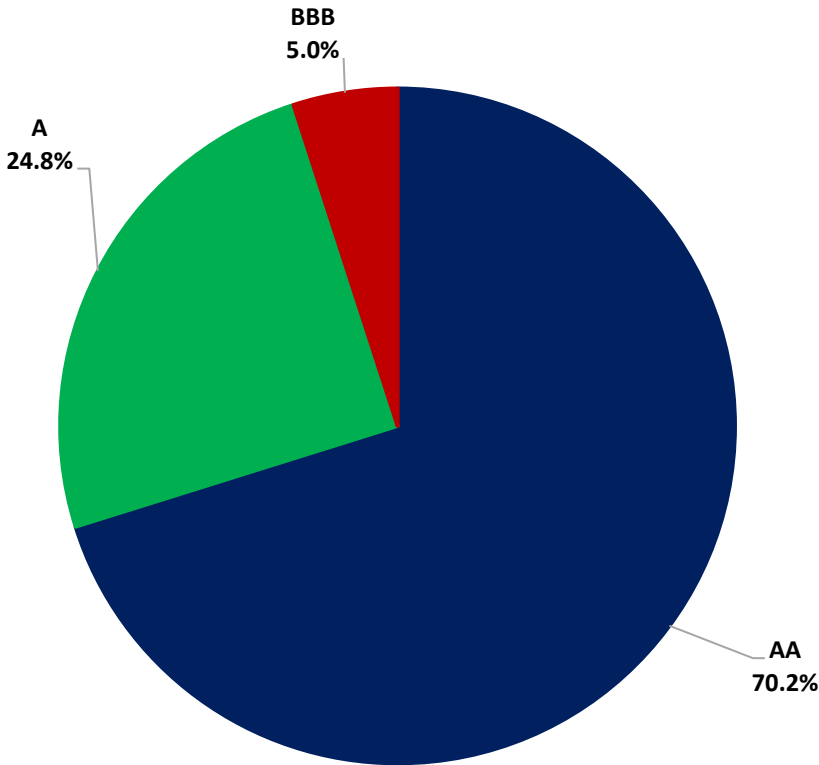
Portfolio Liquidity - Maximum Allowances as at 30 September 2023



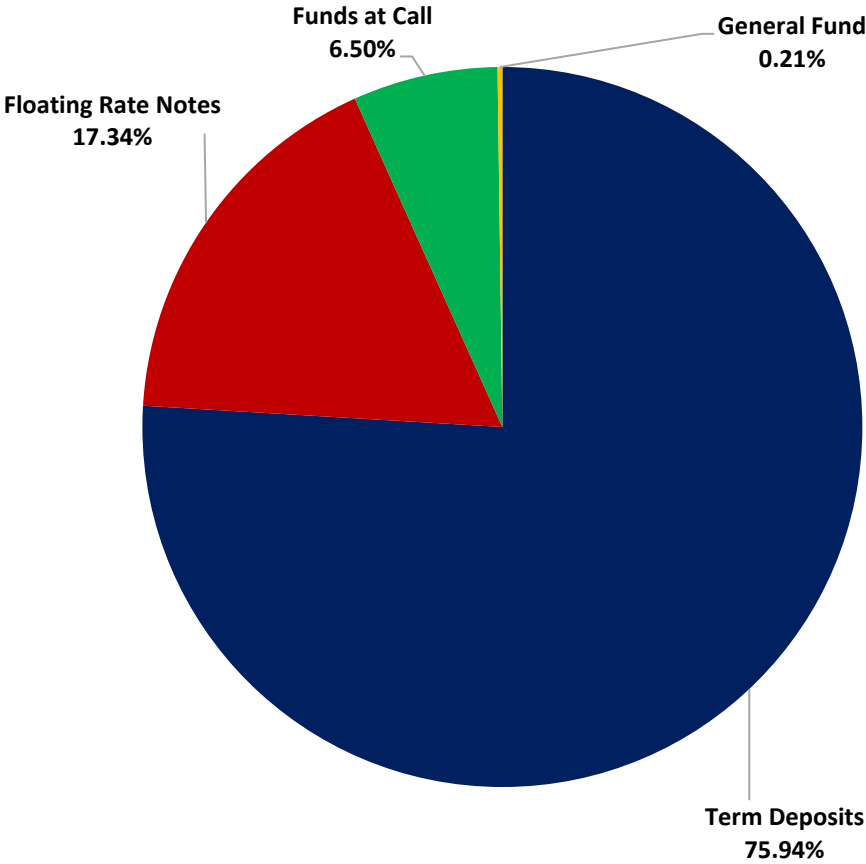
Portfolio Liquidity - Minimum Allocations as at 30 September 2023



Risk Profile as at 30 September 2023



Risk Profile as at 30 September 2023

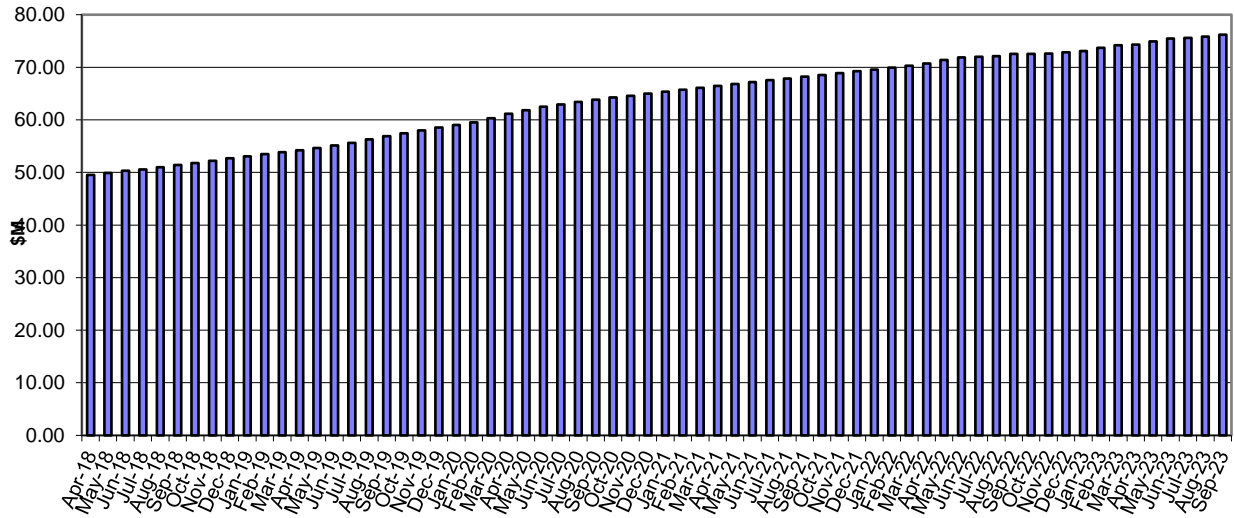


INVESTMENT AND CASH DISTRIBUTION BY FINANCIAL INSTITUTION

as at 30 September 2023

Institution Category	Financial Institution	Amount \$M	Financial Inst. %	Institution Cat. %
Australian Big 4 Bank (and related institutions)	ANZ Bank	24.5	3.0	
	Commonwealth Bank	250.3	30.7	
	National Australia Bank	80.4	9.8	
	Westpac Banking Corporation	207.7	25.4	
Big 4 Total		562.9		68.9
Other Australian ADIs and Australian subsidiaries of foreign institutions	Bank Australia Limited	9.5	1.2	
	Bank of Queensland	18.0	2.2	
	Bendigo & Adelaide Bank	69.5	8.5	
	Great Southern Bank (formerly Credit Union Australia)	6.5	0.8	
	ING Bank	70.0	8.6	
	Suncorp Bank	48.8	6.0	
	Macquarie Bank Ltd	14.0	1.7	
	Northern Territory Treasury Corporation	10.0	1.2	
Newcastle Permanent Building Society	7.3	0.9		
Other ADI Total		253.5		31.1
Grand Total		816.4	100.0	100.0

Cumulative Outperformance over AusBond Benchmark - 2018-2023



Cumulative Outperformance over 30 Day BBR Benchmark - 2018-2023

